



Florida Department of
TRANSPORTATION

SR 5/Overseas Highway
From south of Tollgate Boulevard to
Lignumvitae Channel
FIN 443893-1-52-01

WELCOME!

**State Road (SR) 5/Overseas Highway
From south of Tollgate Boulevard/Mile Marker
(MM) 73.75 to Lignumvitae Channel/MM 77.5
Roadway Improvement Project**

The meeting will begin soon



Florida Department of
TRANSPORTATION

SR 5/Overseas Highway
From south of Tollgate Boulevard to
Lignumvitae Channel
FIN 443893-1-52-01

- If you experience technical difficulties, contact **Miranda Brito** at **786-537-3363** or e-mail Miranda@iscgroup.com so she can assist you



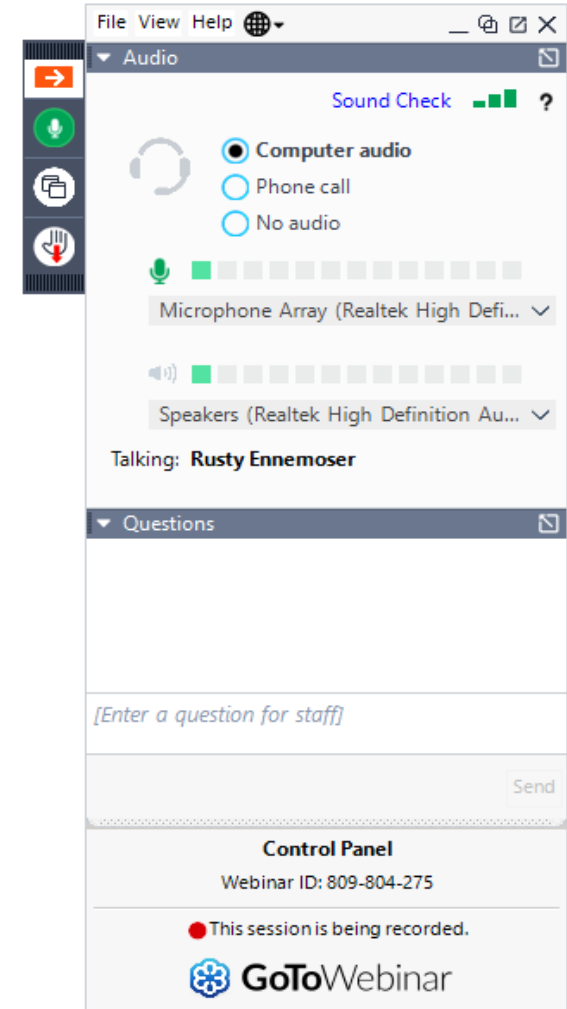
Meeting Agenda

- Rules of Engagement
- Meet the Project Team
- Non-Discrimination Policy
- Project Location
- Project Schedule and cost
- Project Scope of work
- What to Expect
- Maintenance of Traffic
- Questions and Answers



Rules of Engagement

- Attendees **will remain muted** throughout the meeting except for the **Open Discussion** session. Use the **“Raise Hand”** button on your **GoToWebinar** panel to provide a comment. **Provide your full name first, address and comment**
- Attendees are welcome to submit questions/comments using the GoToWebinar Question Panel and a member of the team will respond during the open discussion. Participants will have **three minutes** to ask questions and provide comments





Rules of Engagement

- This meeting is being recorded
- The meeting will begin with a presentation followed by comments and questions
- If you are calling in via phone, you will not be able to provide comments during the meeting. To provide comments, call 786-537-3363 or e-mail Miranda@iscprgroup.com
- Tonight's presentation is available at:
<http://www.fdotmiamidade.com/design-projects/monroe-county/sr-5overseas-hwy-from-mm-73.75-to-mm-77.5.html>
- The project team will remain until 7 p.m.



Project Team

- FDOT Project Manager: Humberto Gomez, P.E.
- Consultant Project Manager: Favio A. Laverde, P.E.
- Consultant Project Engineer: Diego Espitia, P.E.
- Consultant Drainage Engineer: Aylin Costa, P.E.
- Community Outreach Specialist: Paulette Summers



Non-Discrimination Policy

The Florida Department of Transportation is required to comply with various non-discrimination laws and regulations including Title VI of the Civil Rights Act of 1964.

Public participation at this meeting is solicited without regard to race, color, national origin, age, sex, religion, disability or family status. Persons wishing to express their concerns about Title VI may do so by contacting:

District Six Title VI Coordinator

Nicholas Danu, P.E. at 305-470-5219 or in writing: FDOT, 1000 NW 111 Avenue,
Miami, FL 33172, email: Nicholas.Danu@dot.state.fl.us

State Title VI Coordinator

Jacqueline Paramore at 850-414-4753 or in writing: Equal Opportunity Office
605 Suwanne Street, MS 65,
Tallahassee, FL 32399 email: Jacqueline.Paramore@dot.state.fl.us



Project Location





Project Information

Purpose and Need:

The Department has a duty to prolong the life span of the existing road and keep it safe for the public. For this reason, the Department is performing a resurfacing, restoration and rehabilitation (RRR) project along the corridor

Municipalities in the area:

Village of Islamorada

Monroe County



Project Schedule and Cost

Milestone	Date
Production	9/2021
Letting Date	1/2022
Construction Start	4/2022
Construction Duration	18 months
Construction End	10/2023 (Estimate)
Total Construction Cost	\$12.4 million



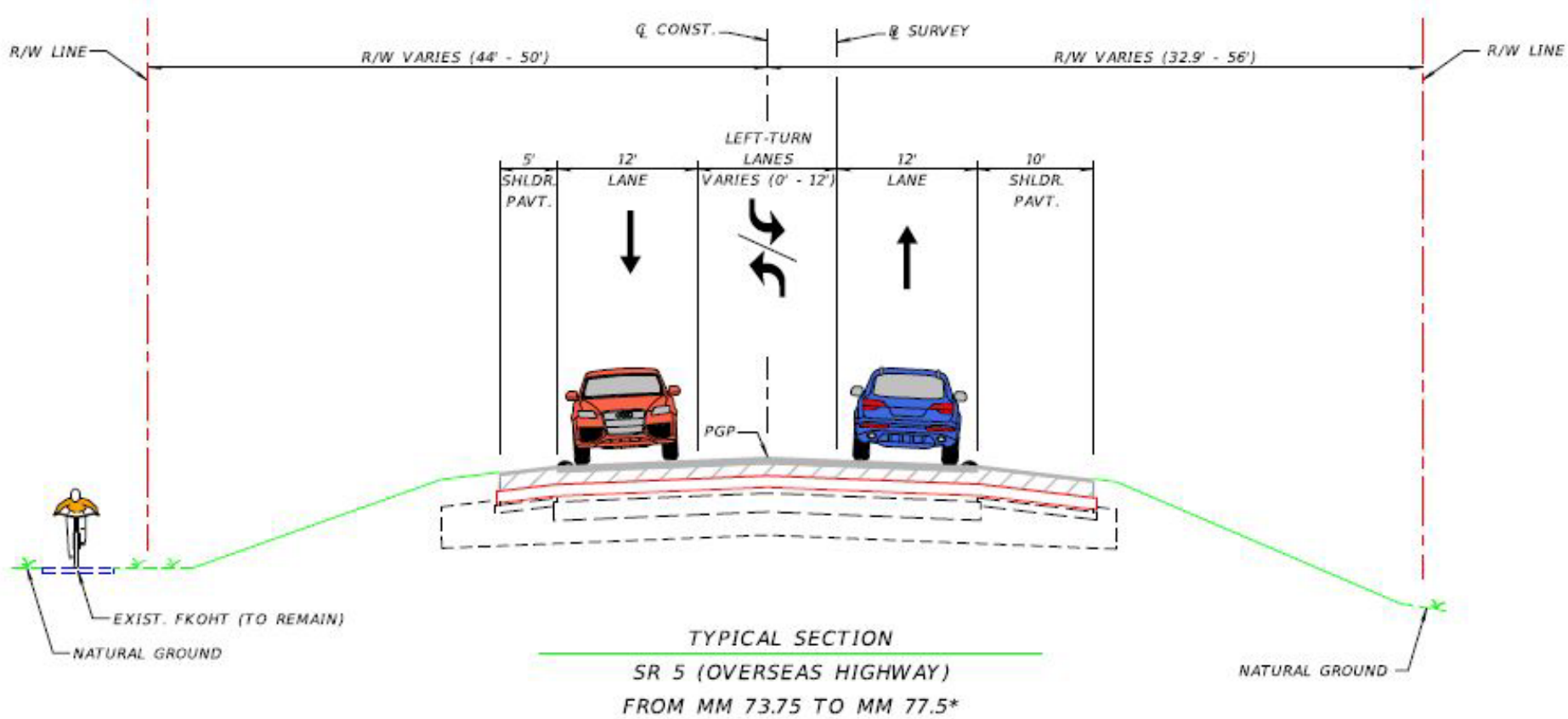
The project is currently in 90% Design Phase.

- Work with municipalities to review plans
- Receive feedback from the public
- Transition project to the construction team



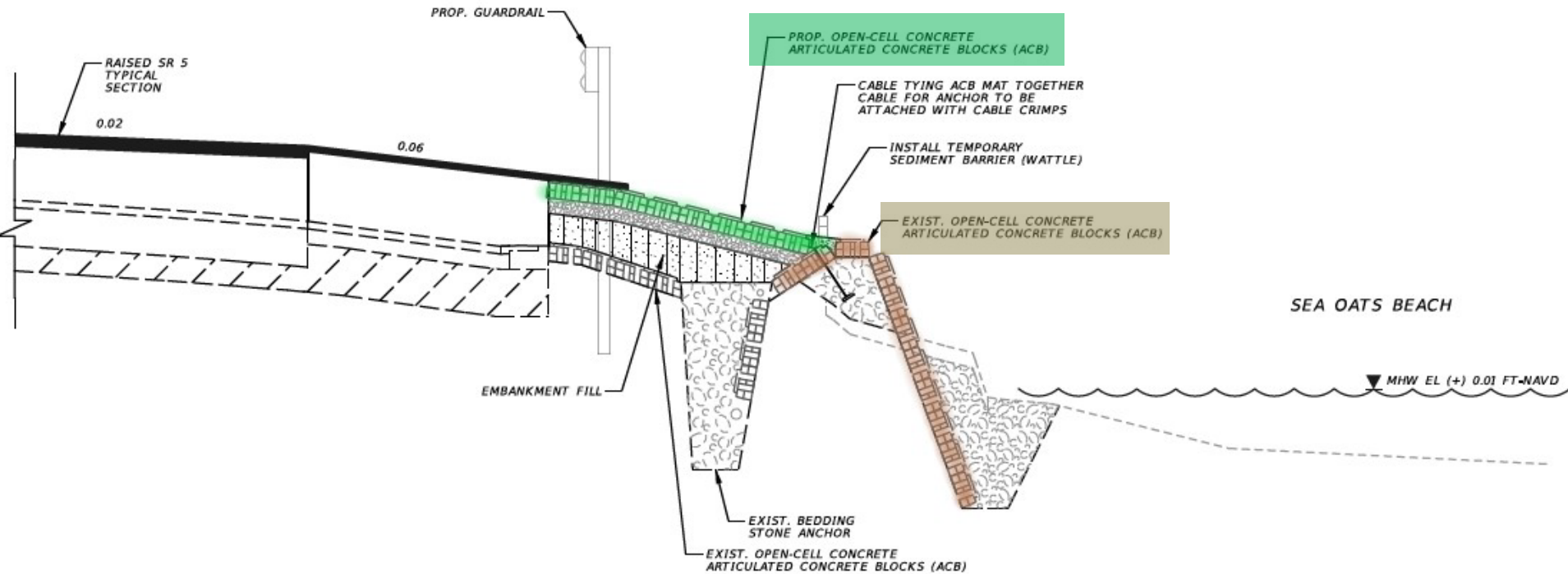
Project Scope

- Repaving and restriping the roadway and shoulders
- Raising the roadway and shoulders from approximately MM 73.9 to MM 76
- Improving drainage
- Tying into the shoreline protection system along Sea Oats Beach
- Upgrading roadway signage and pavement markings
- Upgrading bicycle features at the shared-use path crossing locations
- Evaluating existing landscaping



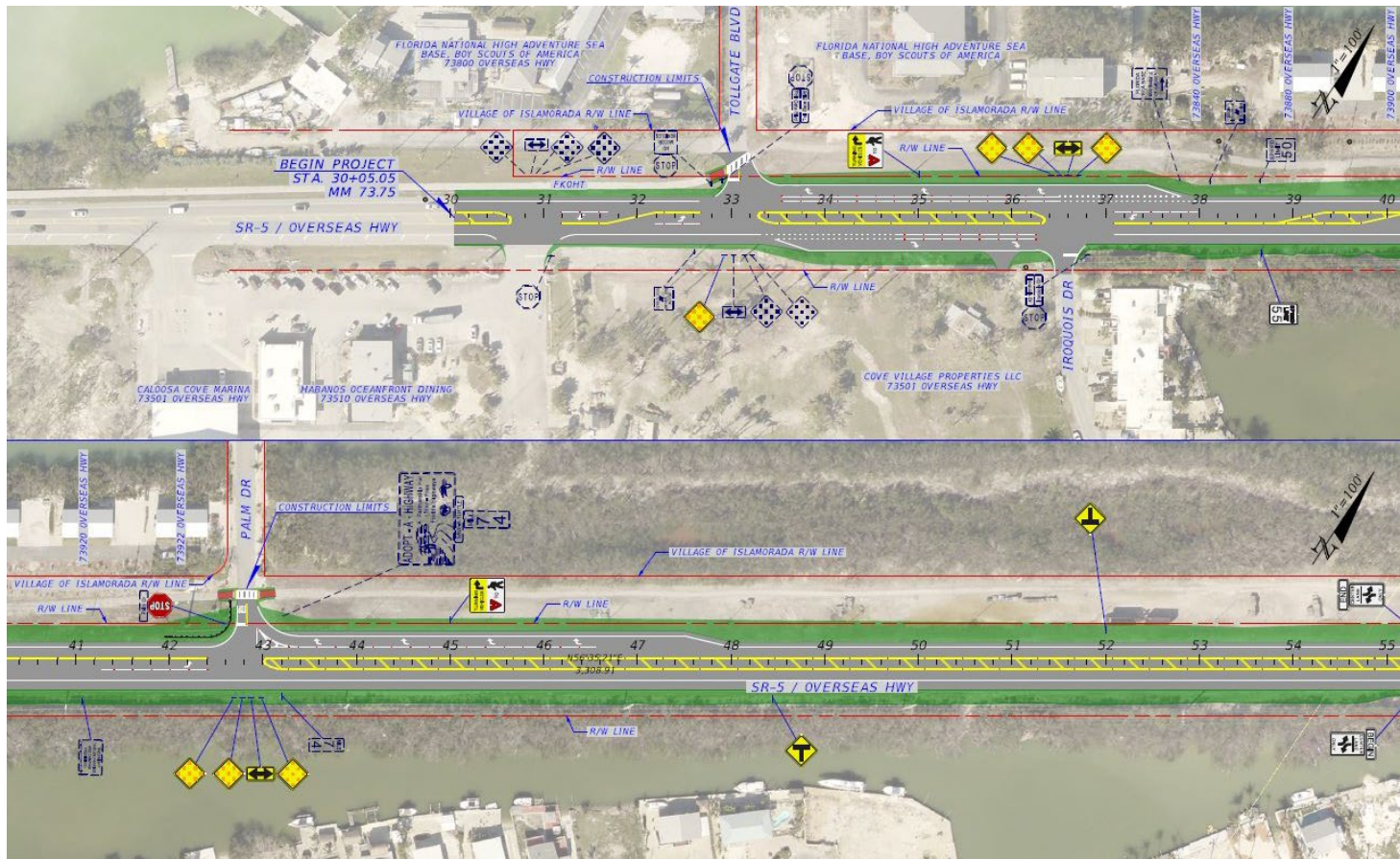
* RAISED SECTION FROM MM 73.75 TO MM 76.14

Sea Oats Beach Revetment System



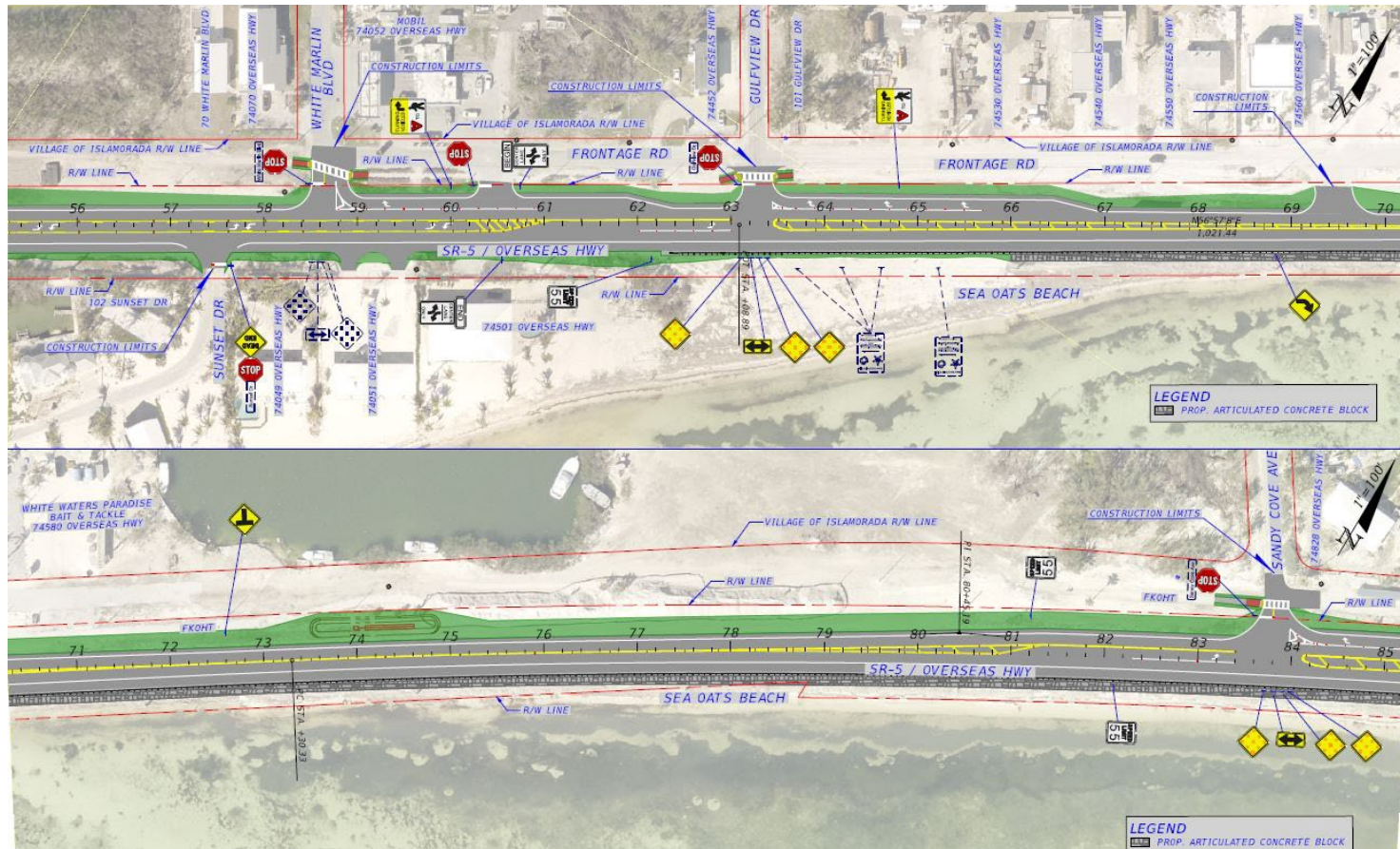


From South of Tollgate Boulevard To South of White Marlin Boulevard



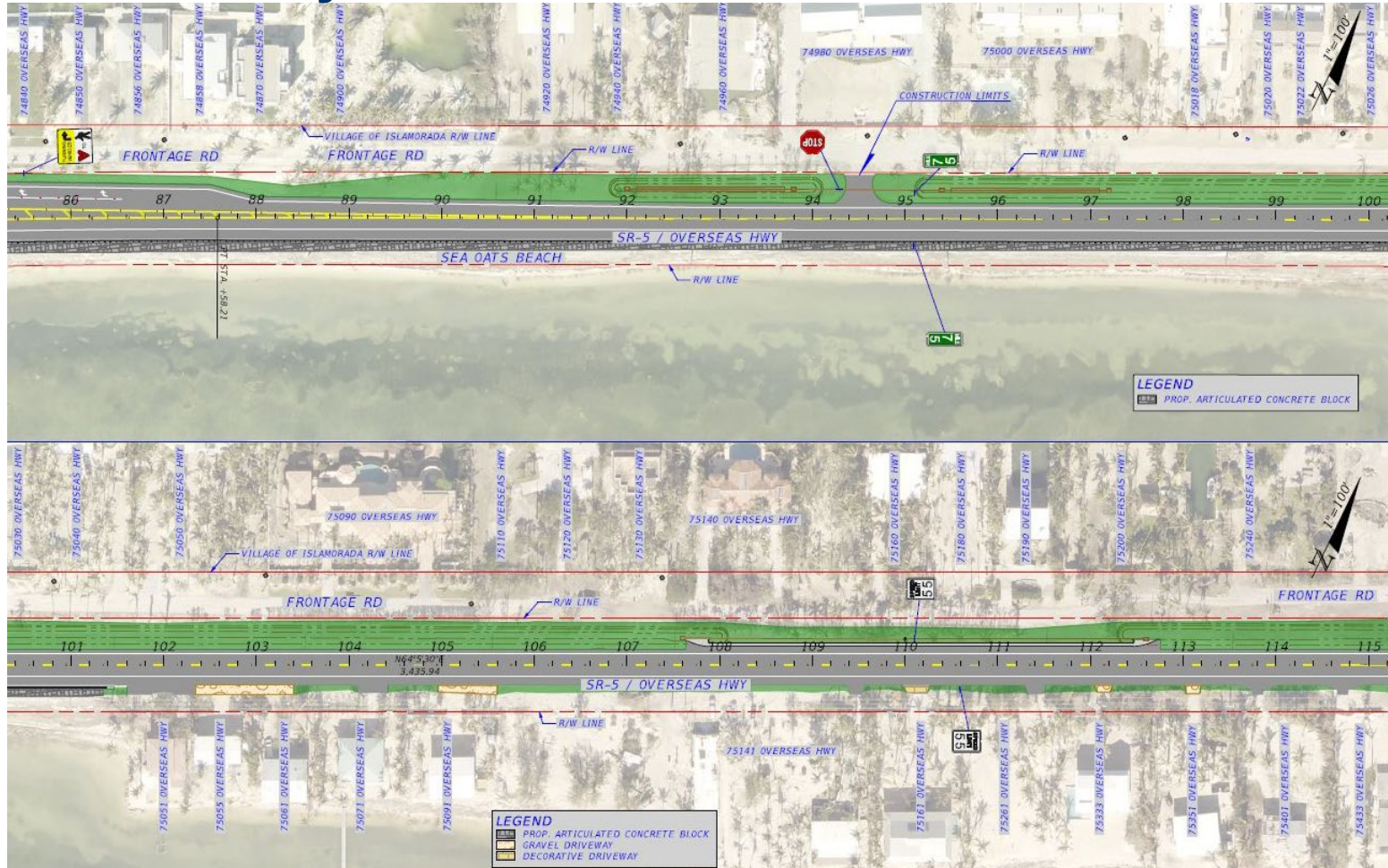


From South of White Marlin Boulevard to North of Sandy Cove Avenue





North of Sandy Cove Avenue to North of Sea Oats Beach



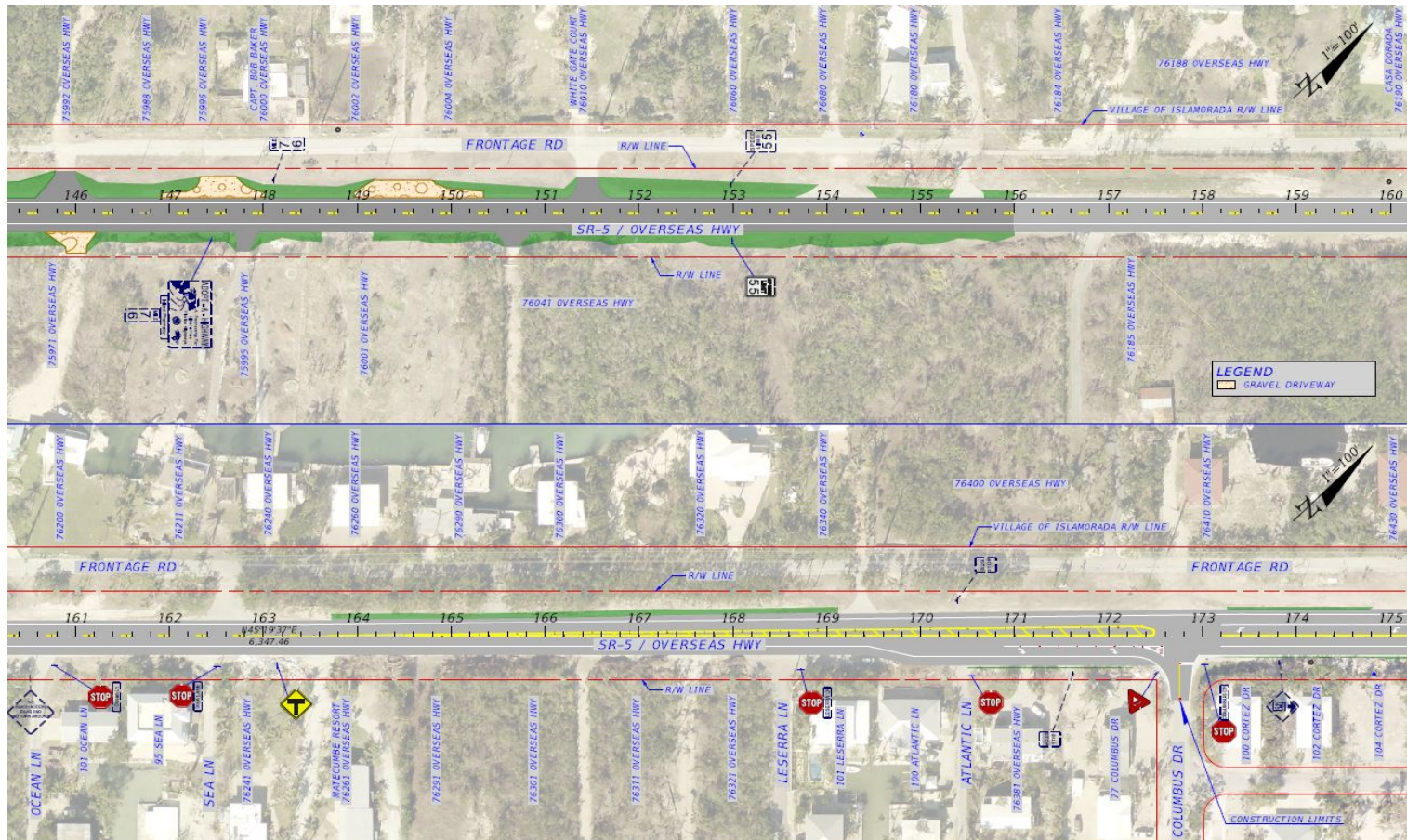


From North of Sea Oats Beach to North of Islamorada Ocean Oasis Lodge



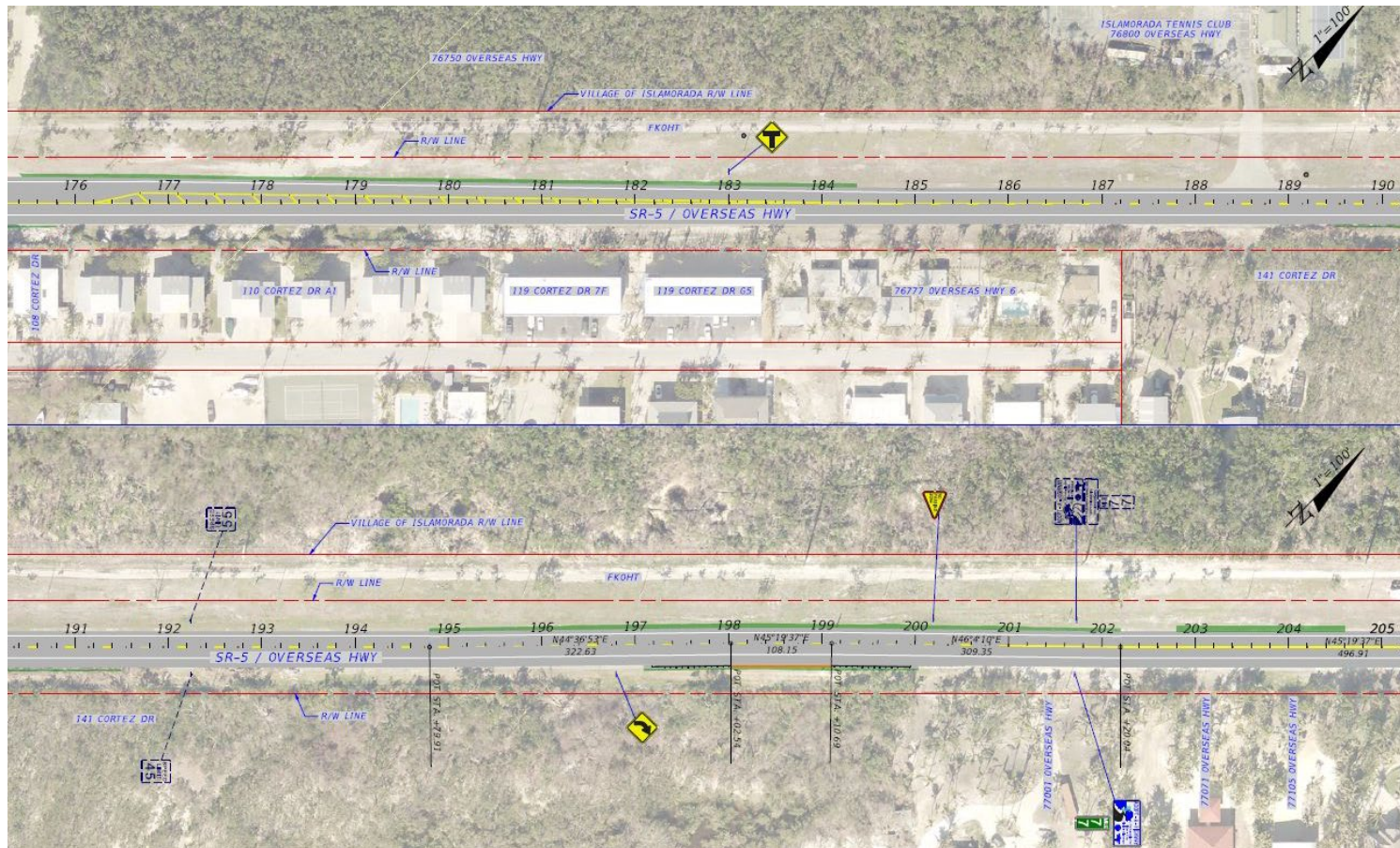


From North of Islamorada Ocean Oasis Lodge to North of Columbus Drive

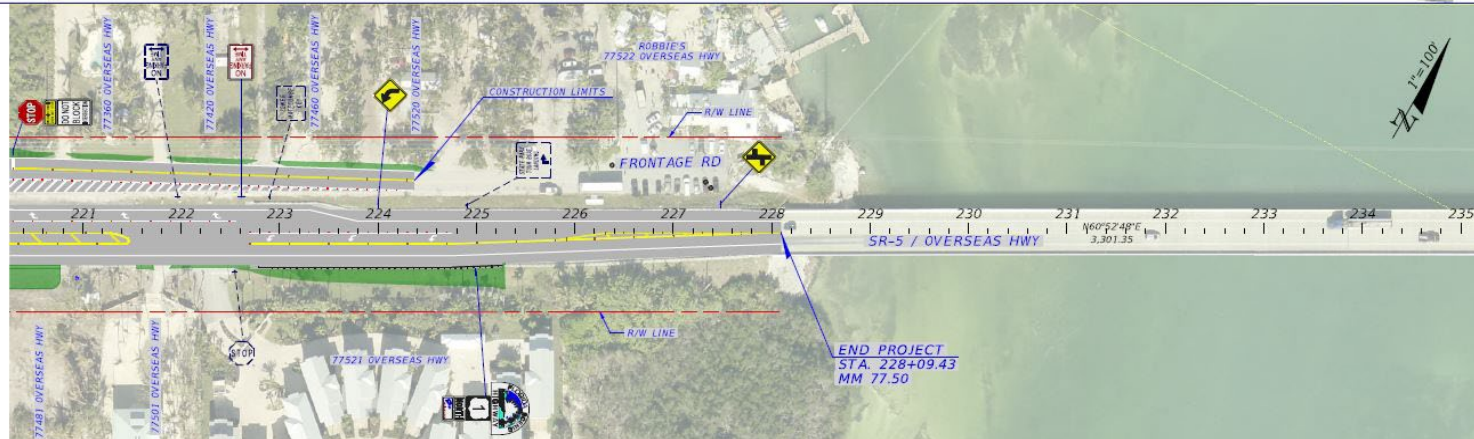
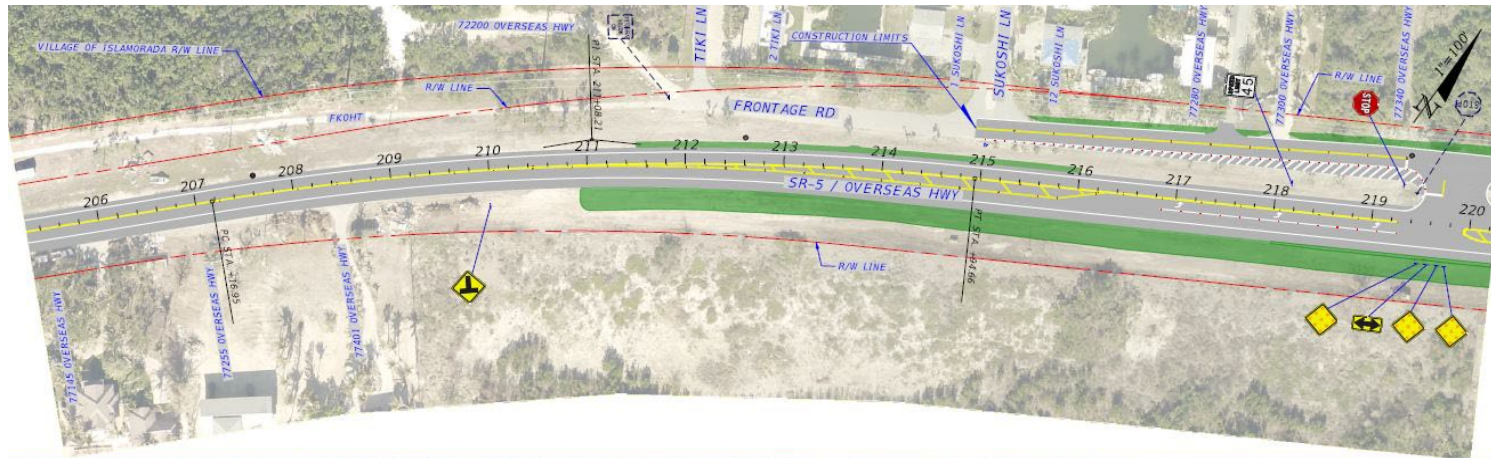




From North of Columbus Drive to South of Tiki Lane



From South of Tiki Lane to Lignumvitae Channel Bridge (End Project)



What to Expect During Construction



Project Phasing and Hours of Operation:

- Maintain existing travel lanes during construction during daytime
- Temporary lane closures will be limited to:
 - Sunday through Thursday
 - 9:30 p.m. to 5 a.m.
 - Flagging Operations
- No construction activities will be permitted during the nighttime except for milling, resurfacing, and striping
- All milled surfaces will be paved prior to opening to traffic



What to Expect During Construction



Speed:

- Existing 55 Mile Per Hour (MPH) limit will remain
- Traffic Control Officer will be provided during lane closure operations

Pedestrian:

- Shared-use Path closures and detours for repairs/replacement will be clearly delineated

Special Events:

- No work allowed during special events





What to Expect During Construction



Dust:

- The contractor will be required to water and sweep in order to minimize construction-related dust



Noise:

- Some noise should be expected during construction



Access:

- Access to property area and businesses will be maintained during construction



Questions and Answers

- Please submit your comments in the question box
- After addressing comments in the question box, we will open the microphones. If we are unable to answer your question, the project team will provide a written response after the meeting
- If you would like to speak, please press the raise your hand button. Participants will have three minutes to provide comments and questions to allow others to speak
- Staff will be available to answer questions in the order they are received and as time permits. If your question is not responded to during the event, a response will be provided in writing following the meeting



Florida Department of
TRANSPORTATION

SR 5/Overseas Highway
From south of Tollgate Boulevard to
Lignumvitae Channel
FIN 443893-1-52-01

CONTACT

Community Outreach Specialist

Paulette Summers

786-510-3921



psummers@mrgmiami.com



www.fdotmonroe.com

Download tonight's presentation at:

<http://www.fdotmiamidade.com/design-projects/monroe-county/sr-5overseas-hwy-from-mm-73.75-to-mm-77.5.html>



Please take our exit survey!



Florida Department of
TRANSPORTATION

SR 5/Overseas Highway
From south of Tollgate Boulevard to
Lignumvitae Channel
FIN 443893-1-52-01

